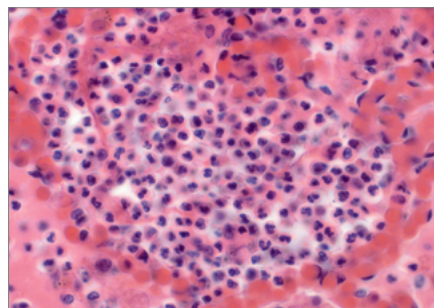
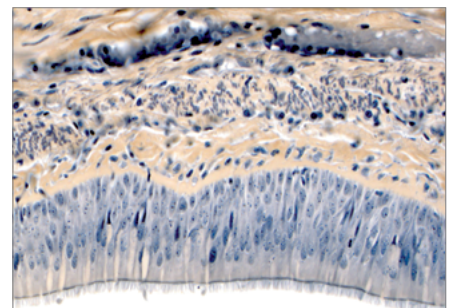


## ZEISS Axio Scope.A1

Your Modular Microscope for Research and Advanced Laboratory Work



*Pulmonary Tissue, Hematoxylin-eosin stain*



*Human Trachea, Heidenhain's iron hematoxylin stain*

### Highlights

Axio Scope.A1 makes use of exceptional flexibility for complex laboratory examinations. Examine tissue samples in pathology or evaluate cytological material. Use the wide range of interchangeable components to precisely adapt Axio Scope.A1 to your research environment.

Use Axio Scope.A1 for a broad range of applications: from anatomical study, transmitted light applications to the thinnest tissue sections.

Axio Scope.A1 features ergonomically correct positions and distances of the focusing knobs, intensity knob and stage drives in order to maximize comfort and ease of use.

- Use 23 stand variations to customize your Axio Scope.A1, with five upper bodies, three lower bodies and two Vario columns.
- Use high-resolution DIC or PlasDIC, for unstained specimens.
- Integrated LED feature guarantees stable and color-neutral transmitted light, with consistent color temperature
- Diversity of fluorescence illumination: LED, HBO or XBO illumination
- The sample space of your Axio Scope.A1 is scalable for specimen sizes up to 110 mm in height and with the Vario column up to 380 mm.
- The ergonomic stage drive can be moved along a 90 mm y-axis for maximum comfort.

### Options for routine tasks & research

Whether you analyze unstained cells using intravital microscopy or observe histologically stained sections and bone sections, transmitted light techniques are the standard for cytology testing in routine laboratories.

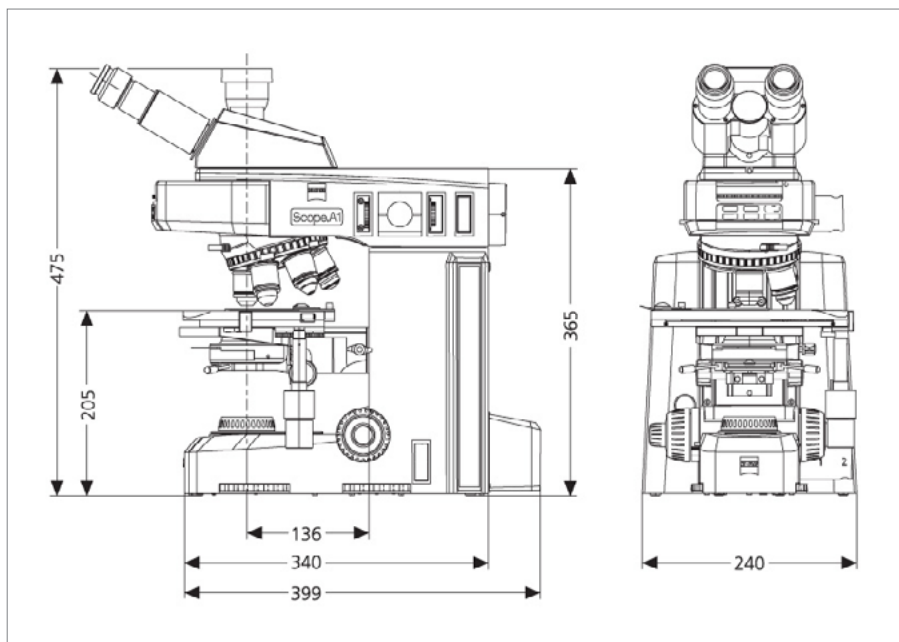
Axio Scope.A1 enables you to master brightfield, darkfield, phase contrast, differential interference contrast (DIC) and the ZEISS economical alternative, PlasDIC.

Axio Scope.A1 is specially configured to support multiple clinical applications such as Pathology, Histology, Cytogenetics, Clinical Immunology, Infection Sciences, Hematology and Molecular Diagnostics.



# ZEISS Axio Scope.A1

Your Modular Microscope for Research and Advanced Laboratory Work



## Special features:

- Wide range of interchangeable components to precisely adapt Axio Scope.A1 to individual needs.
- All optical components in Axio Scope.A1 are anti-fungus treated.

## Suitable for Applications:

- Pathology - Morphological examinations of tissue cells, microorganisms, epithelial cells
- Forensic Pathology – Examination of basic organelles, ducts and molecules. Evaluation of cell types, quantity and anatomical arrangement
- Cytology - Cell size, form and staining of the nucleus, organelles, etc.

## Norms and standards met:

DIN EN 61010-1, (IEC 61010-1),  
IEC 61010-2-101, IVD 98/79/EG

### Technical Data

Illumination	HAL 50 6xH, Bulb HAL 12V/50W
Eyepieces	Eyepiece E-PL 10x/20 Foc., Folding Eyecup
Phototube	Bino Phototube 30/23 100:100
Stage	Stage Carrier Detachable f/Scope, Mechanical Stage, Specimen Holder
Condenser	Condenser Achr Apl 0.9 BF, Condenser Carrier
Objectives	N-Achroplan 2.5x/0.7, N-Achroplan 10x/0.25, N-Achroplan 20x/0.45, N-Achroplan 40x/0.65, N-Achroplan 63x/0.85, N-Achroplan 100x/1.25 Oil
Filters	Contrast Enhancement Filter D =32, White-balance Filter d=32x
Polarizer & Analyzer Components	Polarizer D Fixed w/Rotating red 1, Analyzer Slider D 6x20,



microscopy@zeiss.com  
www.zeiss.com/axioscope



authorized dealer:  
Pulch + Lorenz microscopy  
Am Untergrün 23, D-79232 March  
tel: 07665 9272-0  
fax: 07665 9272-20  
mail: kontakt@pulchlorenz.de  
web: pulchlorenz.de

